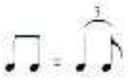


Good morning mister teddybear



Boogie-Shuffle

Hans Hazoth
arr.: Alexander Jekic

c c7 f7

c7 f7

c7 g7 f7

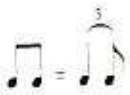
c7 c7 f7

Chorus 1

c7 f7

Easy going

Hans Hazoth
arr.: Alexander Jekic



Blues



First system of piano accompaniment. The music is in 4/4 time and the key signature has one flat (B-flat). The system consists of two staves: a treble clef staff and a bass clef staff. The bass line features a sequence of chords: F7, Bb7, F7, Bb7, and F#m7. The treble staff contains a melodic line with eighth and quarter notes, including a triplet of eighth notes at the beginning.

Second system of piano accompaniment. The bass line features a sequence of chords: F, D7, Gm, C7, F, and D7. The treble staff continues the melodic line with eighth and quarter notes, including a first ending bracket labeled '1.' at the end of the system.

Third system of piano accompaniment. The bass line features a sequence of chords: G7, C7, F, D7, G7, C7, F7, and Bb7. The treble staff includes a second ending bracket labeled '2.' and a section labeled 'Chorus 1' with triplet markings over the notes.

Fourth system of piano accompaniment. The bass line features a sequence of chords: F7, Bb7, F#m7, F, D7, and Gm. The treble staff continues the melodic line with triplet markings over several notes.

Fifth system of piano accompaniment. The bass line features a sequence of chords: C7, F, D7, Gm, C7, F7, and Bb7. The treble staff includes a section labeled 'Chorus 2' with triplet markings over the notes.

No money, no fun

Hans Hazoth
arr.: Alexander Jekic

Blues

b7 eb7 b7 eb7 bv b7 f7 eb7 b7 g7 cm f7 b7 eb7 b7 b7 eb7 bv b7 b7 f7 eb7 b7 a7 cm f7 b7 eb7

Chorus 1

Chorus 2